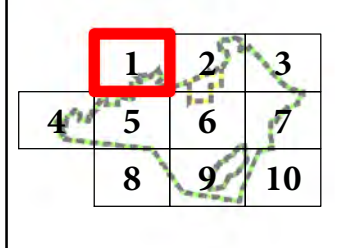




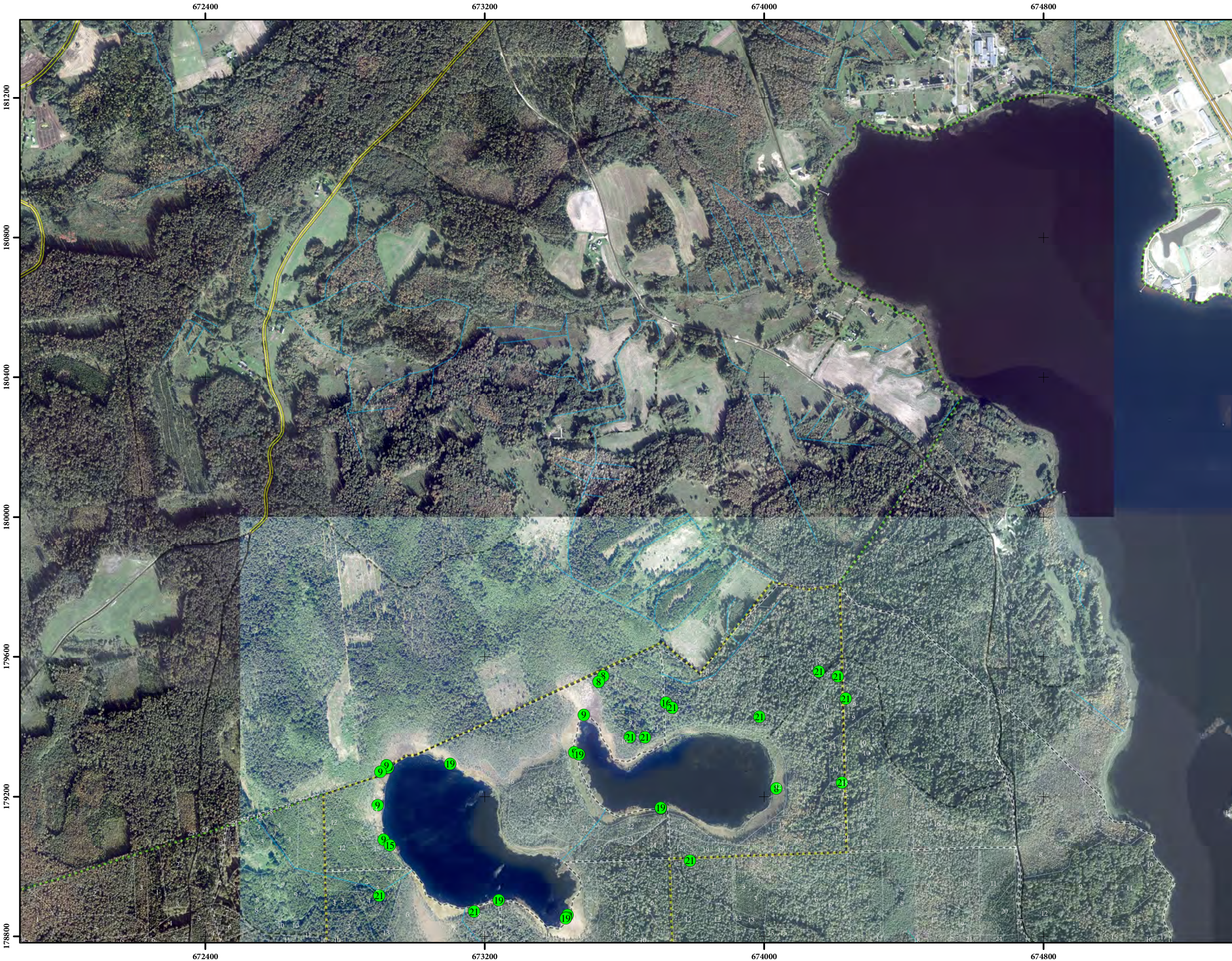
- Apzīmējumi**
- 1 *Agrimonia pilosa*
 - 2 *Anemone sylvestris*
 - 3 *Astragalus arenarius*
 - 4 *Botrychium virginianum*
 - 5 *Carex disperma*
 - 6 *Corallorhiza trifida*
 - 7 *Dactylorhiza baltica*
 - 8 *Dactylorhiza fuchsii*
 - 9 *Dactylorhiza incarnata*
 - 10 *Dactylorhiza maculata*
 - 11 *Dianthus arenarius*
 - 12 *Diphysium complanatum*
 - 13 *Euonymus verrucosa*
 - 14 *Gladiolus imbricatus*
 - 15 *Hammarbya paludosa*
 - 16 *Huperzia selago*
 - 17 *Iris sibirica*
 - 18 *Lathyrus niger*
 - 19 *Liparis loeselii*
 - 20 *Listera cordata*
 - 21 *Lycopodium annotinum*
 - 22 *Lycopodium clavatum*
 - 23 *Malaxis monophyllos*
 - 24 *Onobrychis arenaria*
 - 25 *Orchis mascula*
 - 26 *Orchis morio*
 - 27 *Orobanche caerulea*
 - 28 *Platanthera bifolia*
 - 29 *Platanthera chlorantha*
 - 30 *Prunus spinosa*
 - 31 *Pulsatilla patens*
 - 32 *Stellaria crassifolia*
 - 33 *Vicia tenuifolia*
 - 10 *Dianthus arenarius*
 - 11 *Dactylorhiza fuchsii*
 - 12 *Drepanocladus vernicosus*
 - 13 *Gladiolus imbricatus*
 - 14 *Glyceria striata*
 - 15 *Iris sibirica*
 - 16 *Liparis loeselii*
 - 17 *Pulsatilla patens*
 - 18 *Trifolium dubium*



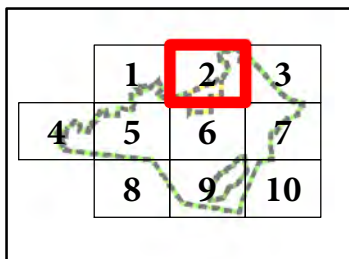
Karte piesaistīta Latvijas koordinātu sistēmai (LKS-92) TM projekcijā. Par kartogrāfisko pamatni izmantota LĢIA sagatavotā ortofoto karte karte mērogā 1:10 000

1:10 000

0 50 100 Meters



- Apzīmējumi**
- 1 *Agrimonia pilosa*
 - 2 *Anemone sylvestris*
 - 3 *Astragalus arenarius*
 - 4 *Botrychium virginianum*
 - 5 *Carex disperma*
 - 6 *Corallorhiza trifida*
 - 7 *Dactylorhiza baltica*
 - 8 *Dactylorhiza fuchsii*
 - 9 *Dactylorhiza incarnata*
 - 10 *Dactylorhiza maculata*
 - 11 *Dianthus arenarius*
 - 12 *Diphysium complanatum*
 - 13 *Euonymus verrucosa*
 - 14 *Gladiolus imbricatus*
 - 15 *Hammarbya paludosa*
 - 16 *Huperzia selago*
 - 17 *Iris sibirica*
 - 18 *Lathyrus niger*
 - 19 *Liparis loeselii*
 - 20 *Listera cordata*
 - 21 *Lycopodium annotinum*
 - 22 *Lycopodium clavatum*
 - 23 *Malaxis monophyllos*
 - 24 *Onobrychis arenaria*
 - 25 *Orchis mascula*
 - 26 *Orchis morio*
 - 27 *Orobanche caerulescens*
 - 28 *Platanthera bifolia*
 - 29 *Platanthera chlorantha*
 - 30 *Prunus spinosa*
 - 31 *Pulsatilla patens*
 - 32 *Stellaria crassifolia*
 - 33 *Vicia tenuifolia*
- Dianthus arenarius*
 - Dactylorhiza fuchsii*
 - Drepanocladus vernicosus*
 - Gladiolus imbricatus*
 - Glyceria striata*
 - Iris sibirica*
 - Liparis loeselii*
 - Pulsatilla patens*
 - Trifolium dubium*

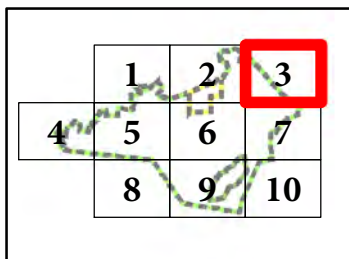


Karte piesaistīta
 Latvijas koordinātu sistēmā
 (LKS-92) TM projekcijā. Par
 kartogrāfisko pamatni izmantota
 LĢIA sagatavotā ortofoto karte
 karte mērogā 1:10 000

1:10 000
 0 50 100
 Meters



- Apzīmējumi**
- 1 *Agrimonia pilosa*
 - 2 *Anemone sylvestris*
 - 3 *Astragalus arenarius*
 - 4 *Botrychium virginianum*
 - 5 *Carex disperma*
 - 6 *Corallorhiza trifida*
 - 7 *Dactylorhiza baltica*
 - 8 *Dactylorhiza fuchsii*
 - 9 *Dactylorhiza incarnata*
 - 10 *Dactylorhiza maculata*
 - 11 *Dianthus arenarius*
 - 12 *Diphysium complanatum*
 - 13 *Euonymus verrucosa*
 - 14 *Gladiolus imbricatus*
 - 15 *Hammarbya paludosa*
 - 16 *Huperzia selago*
 - 17 *Iris sibirica*
 - 18 *Lathyrus niger*
 - 19 *Liparis loeselii*
 - 20 *Listera cordata*
 - 21 *Lycopodium annotinum*
 - 22 *Lycopodium clavatum*
 - 23 *Malaxis monophyllos*
 - 24 *Onobrychis arenaria*
 - 25 *Orchis mascula*
 - 26 *Orchis morio*
 - 27 *Orobanche caerulea*
 - 28 *Platanthera bifolia*
 - 29 *Platanthera chlorantha*
 - 30 *Prunus spinosa*
 - 31 *Pulsatilla patens*
 - 32 *Stellaria crassifolia*
 - 33 *Vicia tenuifolia*
 - Dianthus arenarius*
 - Dactylorhiza fuchsii*
 - Drepanocladus vernicosus*
 - Gladiolus imbricatus*
 - Glyceria striata*
 - Iris sibirica*
 - Liparis loeselii*
 - Pulsatilla patens*
 - Trifolium dubium*

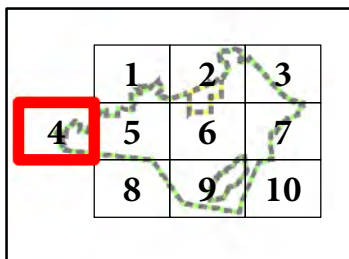


Karte piesastīta
 Latvijas koordinātu sistēmai
 (LKS-92) TM projekcijā. Par
 kartogrāfisko pamatni izmantota
 LĢIA sagatavotā ortofoto karte
 karte mērogā 1:10 000

1:10 000
 0 50 100
 Meters



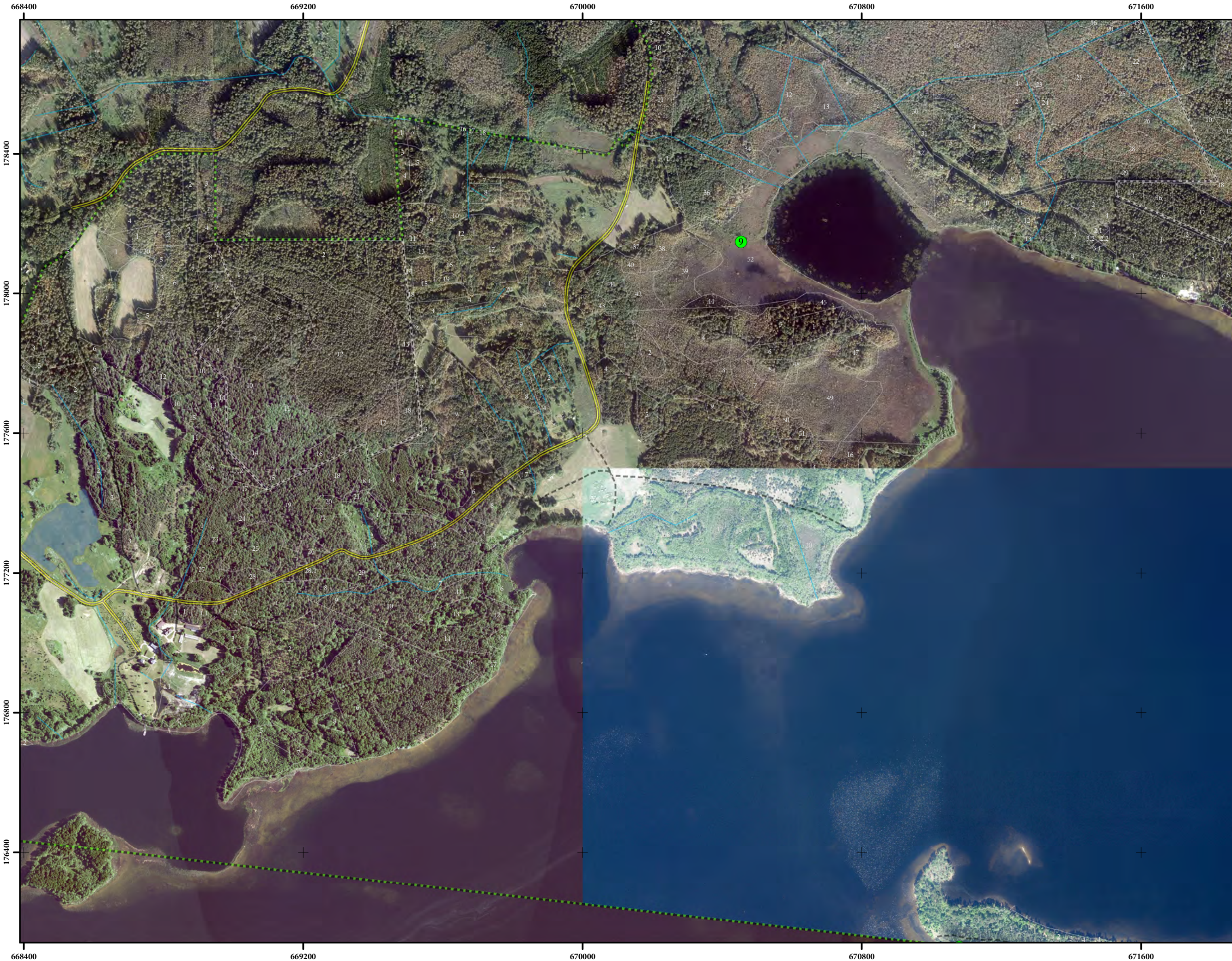
- Apzīmējumi**
- 1 *Agrimonia pilosa*
 - 2 *Anemone sylvestris*
 - 3 *Astragalus arenarius*
 - 4 *Botrychium virginianum*
 - 5 *Carex disperma*
 - 6 *Corallorhiza trifida*
 - 7 *Dactylorhiza baltica*
 - 8 *Dactylorhiza fuchsii*
 - 9 *Dactylorhiza incarnata*
 - 10 *Dactylorhiza maculata*
 - 11 *Dianthus arenarius*
 - 12 *Diphysium complanatum*
 - 13 *Euonymus verrucosa*
 - 14 *Gladiolus imbricatus*
 - 15 *Hammarbya paludosa*
 - 16 *Huperzia selago*
 - 17 *Iris sibirica*
 - 18 *Lathyrus niger*
 - 19 *Liparis loeselii*
 - 20 *Listera cordata*
 - 21 *Lycopodium annotinum*
 - 22 *Lycopodium clavatum*
 - 23 *Malaxis monophyllos*
 - 24 *Onobrychis arenaria*
 - 25 *Orchis mascula*
 - 26 *Orchis morio*
 - 27 *Orobanche caerulea*
 - 28 *Platanthera bifolia*
 - 29 *Platanthera chlorantha*
 - 30 *Prunus spinosa*
 - 31 *Pulsatilla patens*
 - 32 *Stellaria crassifolia*
 - 33 *Vicia tenuifolia*
 - Dianthus arenarius*
 - Dactylorhiza fuchsii*
 - Drepanocladus vernicosus*
 - Gladiolus imbricatus*
 - Glyceria striata*
 - Iris sibirica*
 - Liparis loeselii*
 - Pulsatilla patens*
 - Trifolium dubium*



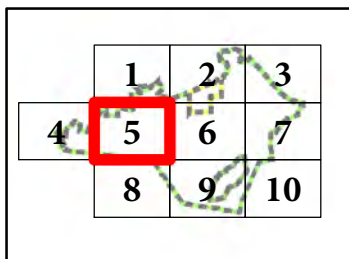
Karte piesastīta Latvijas koordinātu sistēmai (LKS-92) TM projekcijā. Par kartogrāfisko pamatni izmantota LĢIA sagatavotā ortofoto karte karte mērogā 1:10 000

1:10 000

0 50 100 Meters

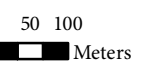


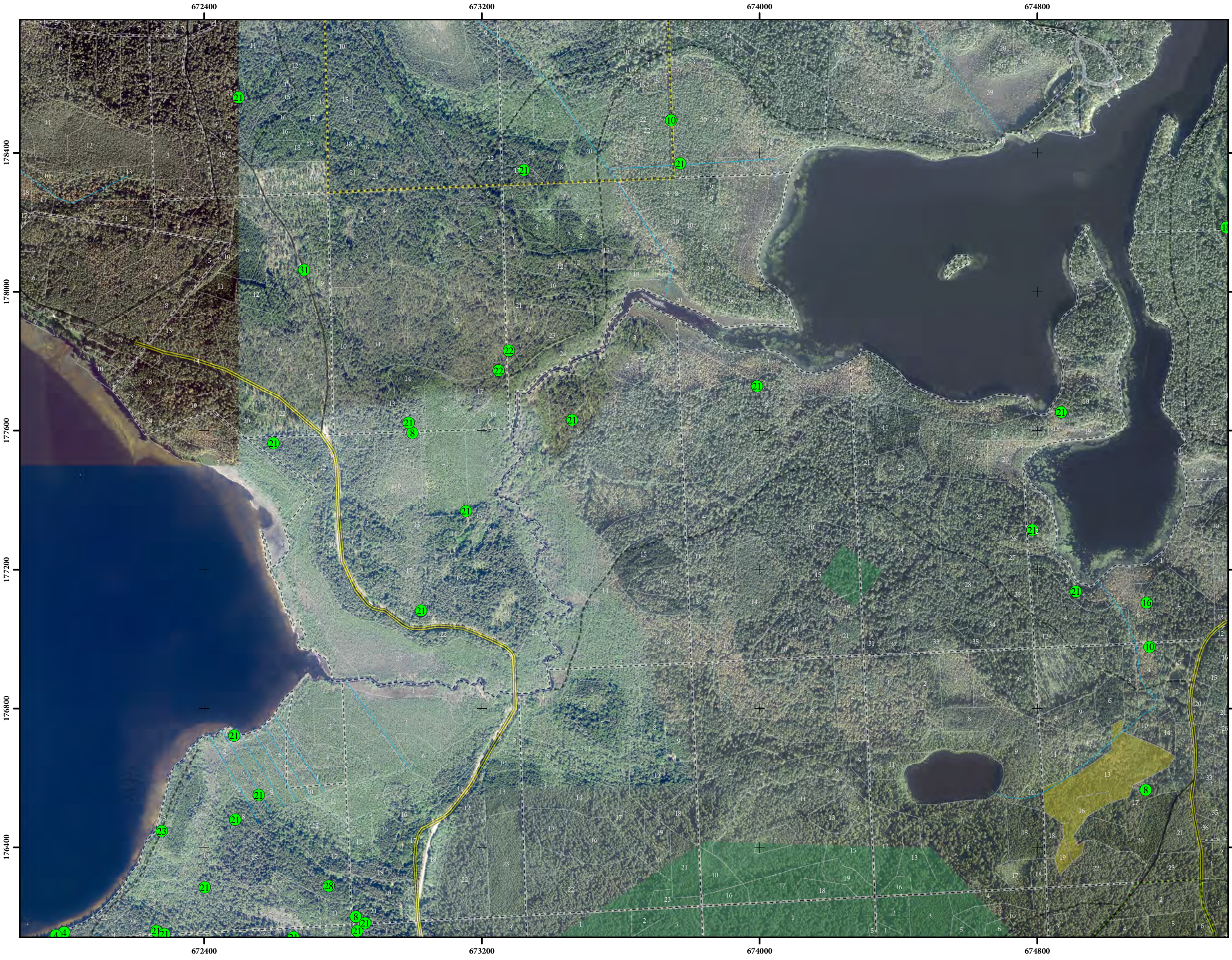
- Apzīmējumi**
- 1 *Agrimonia pilosa*
 - 2 *Anemone sylvestris*
 - 3 *Astragalus arenarius*
 - 4 *Botrychium virginianum*
 - 5 *Carex disperma*
 - 6 *Corallorhiza trifida*
 - 7 *Dactylorhiza baltica*
 - 8 *Dactylorhiza fuchsii*
 - 9 *Dactylorhiza incarnata*
 - 10 *Dactylorhiza maculata*
 - 11 *Dianthus arenarius*
 - 12 *Diphysium complanatum*
 - 13 *Euonymus verrucosa*
 - 14 *Gladiolus imbricatus*
 - 15 *Hammarbya paludosa*
 - 16 *Huperzia selago*
 - 17 *Iris sibirica*
 - 18 *Lathyrus niger*
 - 19 *Liparis loeselii*
 - 20 *Listera cordata*
 - 21 *Lycopodium annotinum*
 - 22 *Lycopodium clavatum*
 - 23 *Malaxis monophyllos*
 - 24 *Onobrychis arenaria*
 - 25 *Orchis mascula*
 - 26 *Orchis morio*
 - 27 *Orobanche caerulea*
 - 28 *Platanthera bifolia*
 - 29 *Platanthera chlorantha*
 - 30 *Prunus spinosa*
 - 31 *Pulsatilla patens*
 - 32 *Stellaria crassifolia*
 - 33 *Vicia tenuifolia*
 - 34 *Dianthus arenarius*
 - 35 *Dactylorhiza fuchsii*
 - 36 *Drepanocladus vernicosus*
 - 37 *Gladiolus imbricatus*
 - 38 *Glyceria striata*
 - 39 *Iris sibirica*
 - 40 *Liparis loeselii*
 - 41 *Pulsatilla patens*
 - 42 *Trifolium dubium*



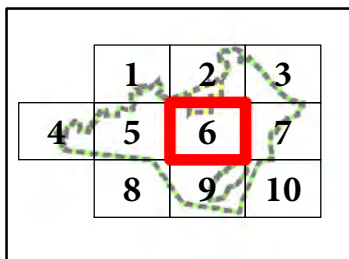
Karte piesaistīta
 Latvijas koordinātu sistēmā
 (LKS-92) TM projekcijā. Par
 kartogrāfisko pamatni izmantota
 LĢIA sagatavotā ortofoto karte
 karte mērogā 1:10 000

1:10 000



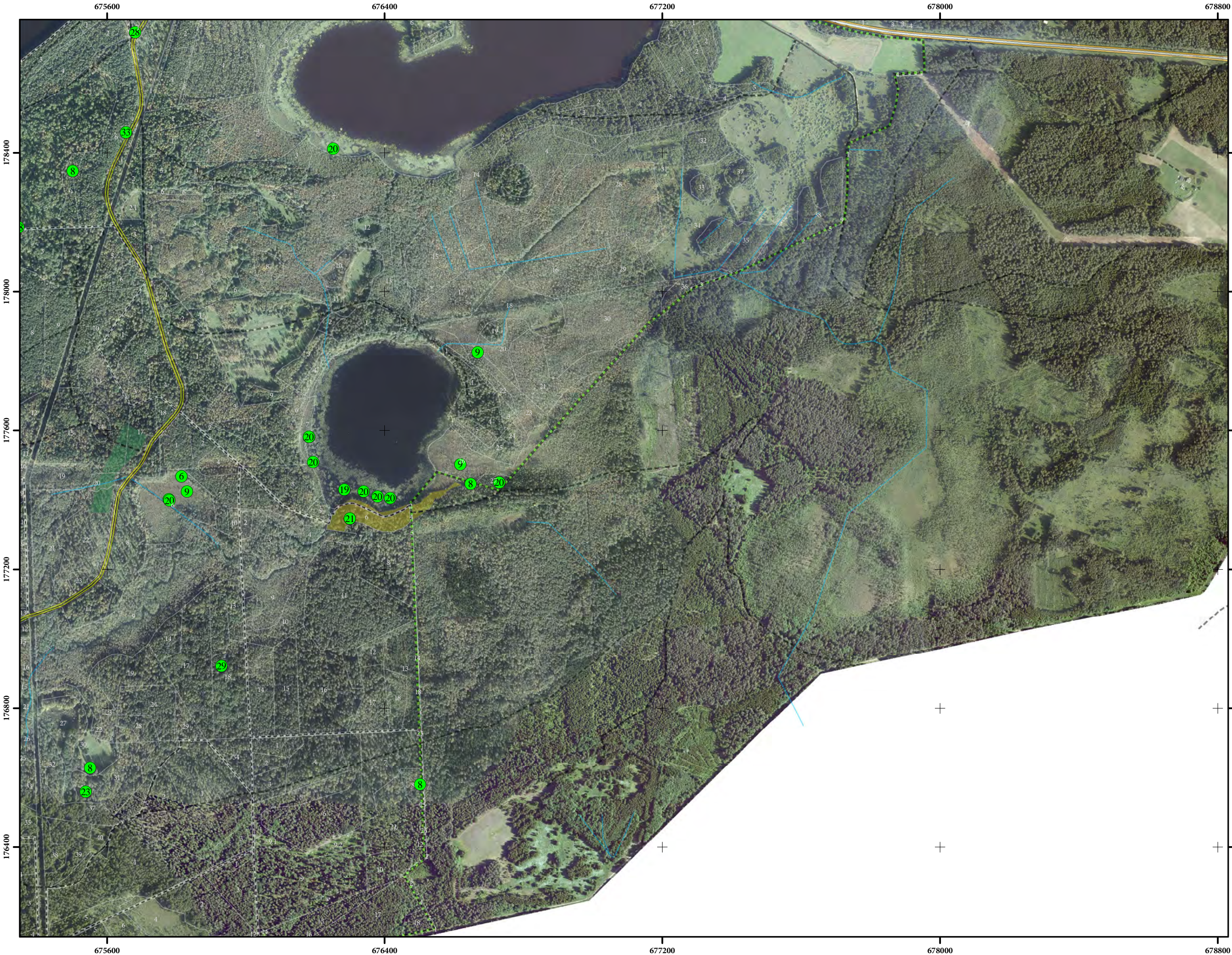


- Apzīmējumi**
- 1 *Agrimonia pilosa*
 - 2 *Anemone sylvestris*
 - 3 *Astragalus arenarius*
 - 4 *Botrychium virginianum*
 - 5 *Carex disperma*
 - 6 *Corallorhiza trifida*
 - 7 *Dactylorhiza baltica*
 - 8 *Dactylorhiza fuchsii*
 - 9 *Dactylorhiza incarnata*
 - 10 *Dactylorhiza maculata*
 - 11 *Dianthus arenarius*
 - 12 *Diphysium complanatum*
 - 13 *Euonymus verrucosa*
 - 14 *Gladiolus imbricatus*
 - 15 *Hammarbya paludosa*
 - 16 *Huperzia selago*
 - 17 *Iris sibirica*
 - 18 *Lathyrus niger*
 - 19 *Liparis loeselii*
 - 20 *Listera cordata*
 - 21 *Lycopodium annotinum*
 - 22 *Lycopodium clavatum*
 - 23 *Malaxis monophyllos*
 - 24 *Onobrychis arenaria*
 - 25 *Orchis mascula*
 - 26 *Orchis morio*
 - 27 *Orobanche caerulescens*
 - 28 *Platanthera bifolia*
 - 29 *Platanthera chlorantha*
 - 30 *Prunus spinosa*
 - 31 *Pulsatilla patens*
 - 32 *Stellaria crassifolia*
 - 33 *Vicia tenuifolia*
 - Dianthus arenarius*
 - Dactylorhiza fuchsii*
 - Drepanocladus vernicosus*
 - Gladiolus imbricatus*
 - Glyceria striata*
 - Iris sibirica*
 - Liparis loeselii*
 - Pulsatilla patens*
 - Trifolium dubium*

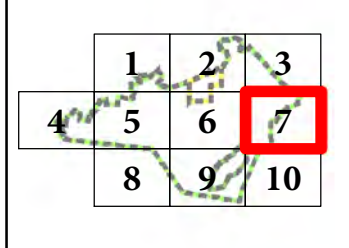


Karte piesaistīta
 Latvijas koordinātu sistēmai
 (LKS-92) TM projekcijā. Par
 kartogrāfisko pamatni izmantota
 LĢIA sagatavotā ortofoto karte
 karte mērogā 1:10 000

1:10 000
 0 50 100
 Meters



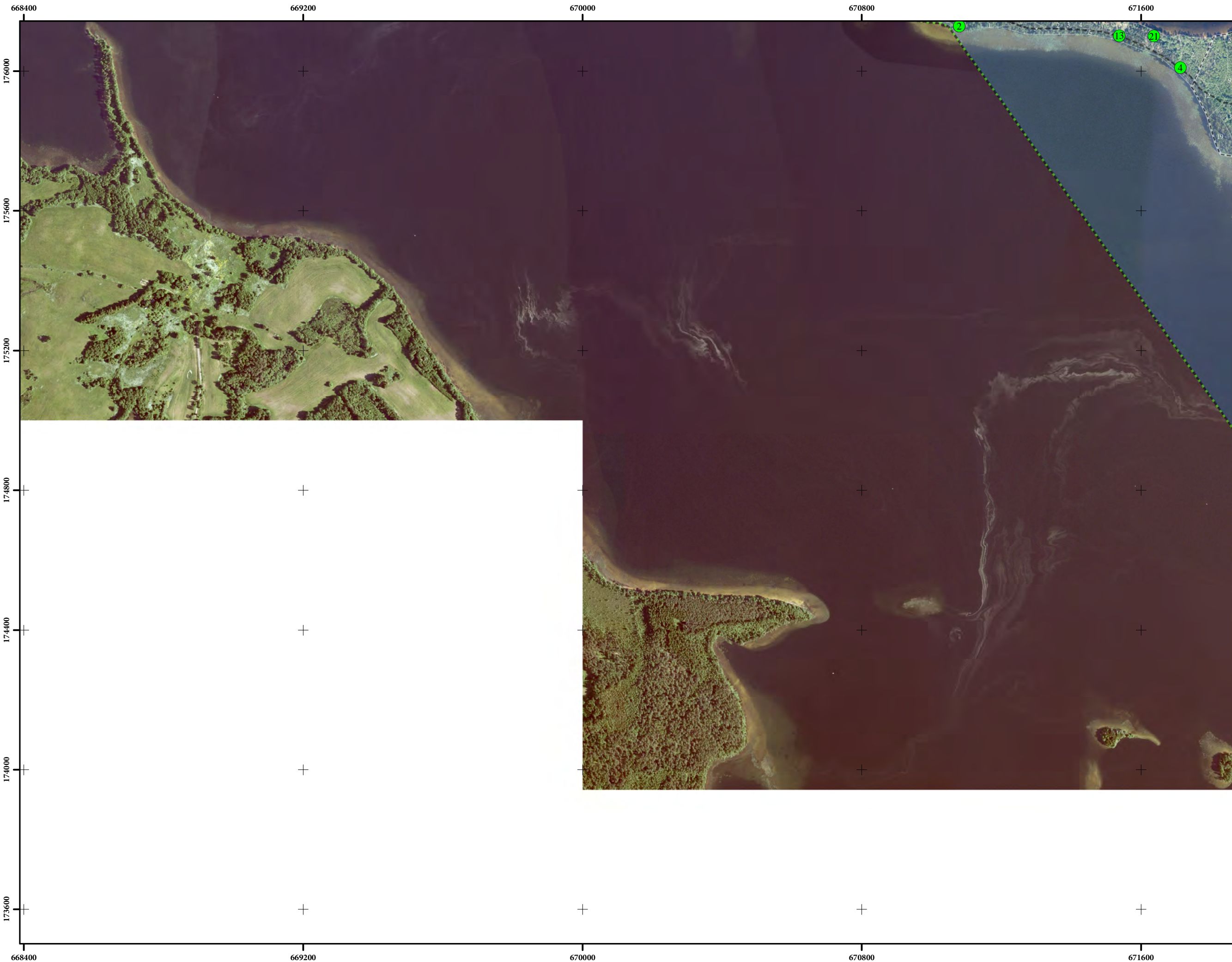
- Apzīmējumi**
- 1 *Agrimonia pilosa*
 - 2 *Anemone sylvestris*
 - 3 *Astragalus arenarius*
 - 4 *Botrychium virginianum*
 - 5 *Carex disperma*
 - 6 *Corallorhiza trifida*
 - 7 *Dactylorhiza baltica*
 - 8 *Dactylorhiza fuchsii*
 - 9 *Dactylorhiza incarnata*
 - 10 *Dactylorhiza maculata*
 - 11 *Dianthus arenarius*
 - 12 *Diphysium complanatum*
 - 13 *Euonymus verrucosa*
 - 14 *Gladiolus imbricatus*
 - 15 *Hammarbya paludosa*
 - 16 *Huperzia selago*
 - 17 *Iris sibirica*
 - 18 *Lathyrus niger*
 - 19 *Liparis loeselii*
 - 20 *Listera cordata*
 - 21 *Lycopodium annotinum*
 - 22 *Lycopodium clavatum*
 - 23 *Malaxis monophyllos*
 - 24 *Onobrychis arenaria*
 - 25 *Orchis mascula*
 - 26 *Orchis morio*
 - 27 *Orobanche caerulescens*
 - 28 *Platanthera bifolia*
 - 29 *Platanthera chlorantha*
 - 30 *Prunus spinosa*
 - 31 *Pulsatilla patens*
 - 32 *Stellaria crassifolia*
 - 33 *Vicia tenuifolia*
 - 40 *Dianthus arenarius*
 - 41 *Dactylorhiza fuchsii*
 - 42 *Drepanocladus vernicosus*
 - 43 *Gladiolus imbricatus*
 - 44 *Glyceria striata*
 - 45 *Iris sibirica*
 - 46 *Liparis loeselii*
 - 47 *Pulsatilla patens*
 - 48 *Trifolium dubium*



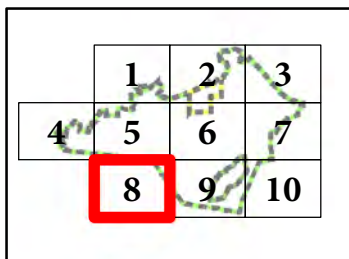
Karte piesaistīta
 Latvijas koordinātu sistēmai
 (LKS-92) TM projekcijā. Par
 kartogrāfisko pamatni izmantota
 LĢIA sagatavotā ortofoto karte
 karte mērogā 1:10 000

1:10 000
 0 50 100
 Meters



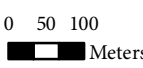


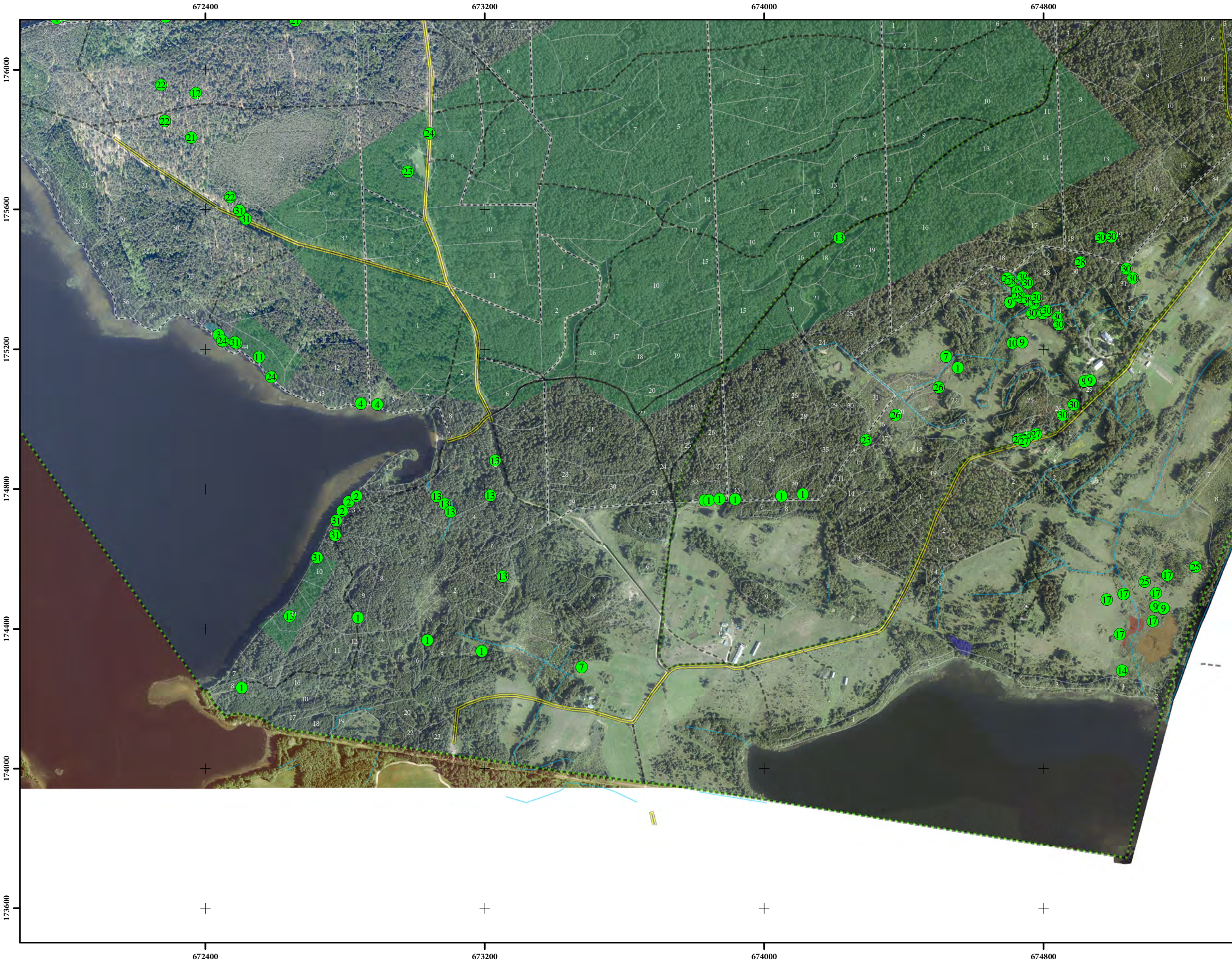
- Apzīmējumi**
- 1 *Agrimonia pilosa*
 - 2 *Anemone sylvestris*
 - 3 *Astragalus arenarius*
 - 4 *Botrychium virginianum*
 - 5 *Carex disperma*
 - 6 *Corallorhiza trifida*
 - 7 *Dactylorhiza baltica*
 - 8 *Dactylorhiza fuchsii*
 - 9 *Dactylorhiza incarnata*
 - 10 *Dactylorhiza maculata*
 - 11 *Dianthus arenarius*
 - 12 *Diphysium complanatum*
 - 13 *Euonymus verrucosa*
 - 14 *Gladiolus imbricatus*
 - 15 *Hammarbya paludosa*
 - 16 *Huperzia selago*
 - 17 *Iris sibirica*
 - 18 *Lathyrus niger*
 - 19 *Liparis loeselii*
 - 20 *Listera cordata*
 - 21 *Lycopodium annotinum*
 - 22 *Lycopodium clavatum*
 - 23 *Malaxis monophyllos*
 - 24 *Onobrychis arenaria*
 - 25 *Orchis mascula*
 - 26 *Orchis morio*
 - 27 *Orobanche caerulea*
 - 28 *Platanthera bifolia*
 - 29 *Platanthera chlorantha*
 - 30 *Prunus spinosa*
 - 31 *Pulsatilla patens*
 - 32 *Stellaria crassifolia*
 - 33 *Vicia tenuifolia*
 - Dianthus arenarius*
 - Dactylorhiza fuchsii*
 - Drepanocladus vernicosus*
 - Gladiolus imbricatus*
 - Glyceria striata*
 - Iris sibirica*
 - Liparis loeselii*
 - Pulsatilla patens*
 - Trifolium dubium*



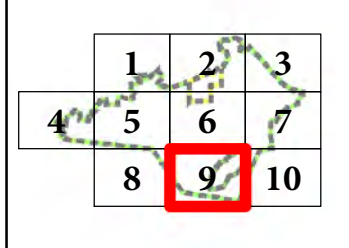
Karte piesaistīta
 Latvijas koordinātu sistēmā
 (LKS-92) TM projekcijā. Par
 kartogrāfisko pamatni izmantota
 LĢIA sagatavotā ortofoto karte
 karte mērogā 1:10 000

1:10 000



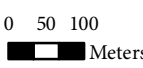


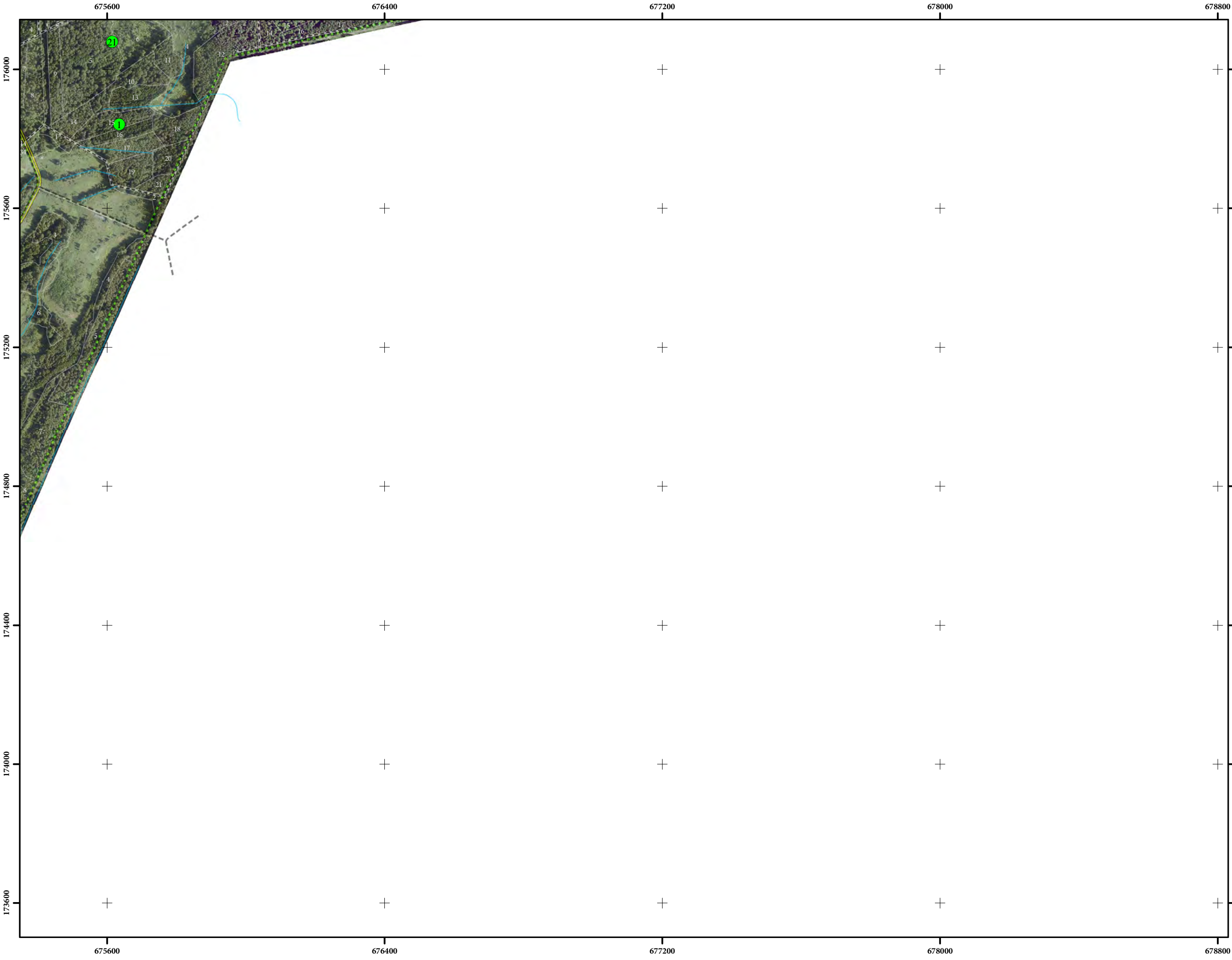
- Apzīmējumi**
- 1 *Agrimonia pilosa*
 - 2 *Anemone sylvestris*
 - 3 *Astragalus arenarius*
 - 4 *Botrychium virginianum*
 - 5 *Carex disperma*
 - 6 *Corallorhiza trifida*
 - 7 *Dactylorhiza baltica*
 - 8 *Dactylorhiza fuchsii*
 - 9 *Dactylorhiza incarnata*
 - 10 *Dactylorhiza maculata*
 - 11 *Dianthus arenarius*
 - 12 *Diphysium complanatum*
 - 13 *Euonymus verrucosa*
 - 14 *Gladiolus imbricatus*
 - 15 *Hammarbya paludosa*
 - 16 *Huperzia selago*
 - 17 *Iris sibirica*
 - 18 *Lathyrus niger*
 - 19 *Liparis loeselii*
 - 20 *Listera cordata*
 - 21 *Lycopodium annotinum*
 - 22 *Lycopodium clavatum*
 - 23 *Malaxis monophyllos*
 - 24 *Onobrychis arenaria*
 - 25 *Orchis mascula*
 - 26 *Orchis morio*
 - 27 *Orobanche caerulea*
 - 28 *Platanthera bifolia*
 - 29 *Platanthera chlorantha*
 - 30 *Prunus spinosa*
 - 31 *Pulsatilla patens*
 - 32 *Stellaria crassifolia*
 - 33 *Vicia tenuifolia*
 - 1 *Dianthus arenarius*
 - 2 *Dactylorhiza fuchsii*
 - 3 *Drepanocladus vernicosus*
 - 4 *Gladiolus imbricatus*
 - 5 *Glyceria striata*
 - 6 *Iris sibirica*
 - 7 *Liparis loeselii*
 - 8 *Pulsatilla patens*
 - 9 *Trifolium dubium*



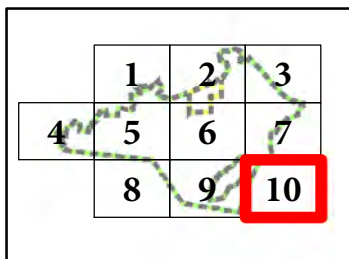
Karte piesaistīta
 Latvijas koordinātu sistēmai
 (LKS-92) TM projekcijā. Par
 kartogrāfisko pamatni izmantota
 LĢIA sagatavotā ortofoto karte
 karte mērogā 1:10 000

1:10 000





- Apzīmējumi**
- 1 *Agrimonia pilosa*
 - 2 *Anemone sylvestris*
 - 3 *Astragalus arenarius*
 - 4 *Botrychium virginianum*
 - 5 *Carex disperma*
 - 6 *Corallorhiza trifida*
 - 7 *Dactylorhiza baltica*
 - 8 *Dactylorhiza fuchsii*
 - 9 *Dactylorhiza incarnata*
 - 10 *Dactylorhiza maculata*
 - 11 *Dianthus arenarius*
 - 12 *Diphasium complanatum*
 - 13 *Euonymus verrucosa*
 - 14 *Gladiolus imbricatus*
 - 15 *Hammarbya paludosa*
 - 16 *Huperzia selago*
 - 17 *Iris sibirica*
 - 18 *Lathyrus niger*
 - 19 *Liparis loeselii*
 - 20 *Listera cordata*
 - 21 *Lycopodium annotinum*
 - 22 *Lycopodium clavatum*
 - 23 *Malaxis monophyllos*
 - 24 *Onobrychis arenaria*
 - 25 *Orchis mascula*
 - 26 *Orchis morio*
 - 27 *Orobanche caerulea*
 - 28 *Platanthera bifolia*
 - 29 *Platanthera chlorantha*
 - 30 *Prunus spinosa*
 - 31 *Pulsatilla patens*
 - 32 *Stellaria crassifolia*
 - 33 *Vicia tenuifolia*
 - Dianthus arenarius*
 - Dactylorhiza fuchsii*
 - Drepanocladus vernicosus*
 - Gladiolus imbricatus*
 - Glyceria striata*
 - Iris sibirica*
 - Liparis loeselii*
 - Pulsatilla patens*
 - Trifolium dubium*



Karte piesaistīta
 Latvijas koordinātu sistēmā
 (LKS-92) TM projekcijā. Par
 kartogrāfisko pamatni izmantota
 LĢIA sagatavotā ortofoto karte
 karte mērogā 1:10 000

1:10 000
 0 50 100
 Meters

